

6

5

4

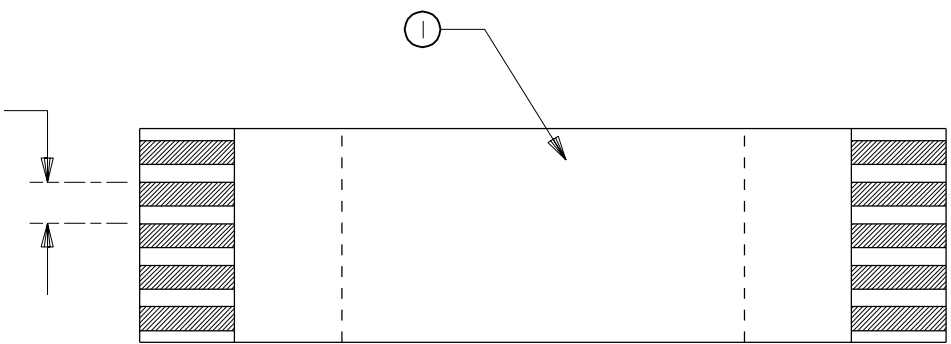
3

2

21020

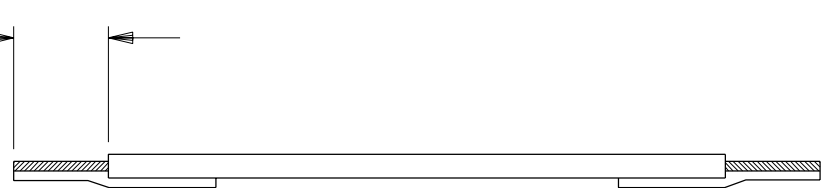
ITEM	DESCRIPTION	P/N	QTY	CKT. SIZE	TEMP. RATING
①	CABLE	21020-0543	2.008"	50	L

$\frac{.020 \pm .002}{(0.50 \pm 0.05)}$



$\frac{2.008 \pm .118}{(51.00 \pm 3.00)}$

$\frac{.157 \pm .039}{(4.00 \pm 1.00)}$  TYP



$\frac{.236}{(6.00)}$  REF TYP

NOTE:

NO PRINTING TO BE ALLOWED ON CABLE

REF. PRODUCT SPEC. NO. SMPS-21020

DIMENSIONS SHOWN (METRIC) INCH

UNLESS OTHERWISE SPECIFIED TOLERANCES: ANGULAR  $\pm 1/2^\circ$

	INCH	METRIC
3 PLACE	$\pm .005$	---
2 PLACE	$\pm .01$	$\pm 0.13$
1 PLACE	---	$\pm 0.25$

DRAFT WHERE APPLICABLE MUST REMAIN WITHIN DIMENSIONS

$\nabla = 0$   $\blacktriangledown = 0$

REVISE ONLY ON CAD SYSTEM

TITLE  
 0.5 mm  $\odot$  FFC JUMPER  
 STYLE TYPE "A"  
 PDR UAU-000944-00-00

MOLEX INCORPORATED  
 LISLE, ILL. 60532 U.S.A.

SHEET NO. 1 OF 1 DATE 02/06/19  
 PART NO. 21020-0543 DRWG. NO. 21020-0543

A  
 FINAL RELEASE  
 ECN UAU2002-0223  
 DEMEO 02/06/19

DRWG. BY DRD CHK'D. BY TGP  
 APP'D. BY RLM SCALE -- : --

FILE NAME 21020-0543 SO1  
 THIS DRAWING CONTAINS INFORMATION THAT IS PROPRIETARY TO MOLEX INC. AND SHOULD NOT BE USED WITHOUT WRITTEN PERMISSION.  
 DIV. AU SIZE A

LTR. REVISIONS

LTR. REVISIONS

6

5

4

3

2

1